

DZIP1 Antibody (C-term)
Purified Rabbit Polyclonal Antibody (Pab)
Catalog # AP21074a**Specification**

DZIP1 Antibody (C-term) - Product Information

Application	WB,E
Primary Accession	Q86YF9
Reactivity	Human
Host	Rabbit
Clonality	Polyclonal
Isotype	Rabbit IgG
Calculated MW	98664

DZIP1 Antibody (C-term) - Additional Information**Gene ID** 22873**Other Names**

Zinc finger protein DZIP1, DAZ-interacting protein 1/2, DZIP1, DZIP, DZIP2, KIAA0996

Target/Specificity

This DZIP1 antibody is generated from a rabbit immunized with a KLH conjugated synthetic peptide between 747-781 amino acids from the C-terminal region of human DZIP1.

Dilution

WB~~1:1000

E~~Use at an assay dependent concentration.

Format

Purified polyclonal antibody supplied in PBS with 0.09% (W/V) sodium azide. This antibody is purified through a protein A column, followed by peptide affinity purification.

Storage

Maintain refrigerated at 2-8°C for up to 2 weeks. For long term storage store at -20°C in small aliquots to prevent freeze-thaw cycles.

Precautions

DZIP1 Antibody (C-term) is for research use only and not for use in diagnostic or therapeutic procedures.

DZIP1 Antibody (C-term) - Protein Information**Name** DZIP1 ([HGNC:20908](#))**Synonyms** DZIP, DZIP2, KIAA0996**Function** Molecular adapter that recruits protein complexes required for cilium assembly and

function to the cilium basal body (PubMed:[19852954](#), PubMed:[23955340](#), PubMed:[27979967](#), PubMed:[32051257](#)). At the exit of mitosis, localizes to the basal body and ciliary base of the forming primary cilium where it recruits and activates RAB8A to direct vesicle-mediated transport of proteins to the cilium (By similarity). Also recruits the BBSome, a complex involved in cilium biogenesis, by bridging it to PCM1 at the centriolar satellites of the cilium (PubMed:[27979967](#)). It is also required for the recruitment to the cilium basal body of the intraflagellar transport (IFT) machinery as well as the ciliary appendage proteins CEP164 and NINEIN (By similarity). Functions as a regulator of Hedgehog signaling both through its role in cilium assembly but also probably through its ability to retain GLI3 within the cytoplasm (By similarity). It is involved in spermatogenesis through its role in organization of the basal body and assembly of the sperm flagellum (PubMed:[32051257](#)). Also indirectly involved in heart development through its function in ciliogenesis (PubMed:[31118289](#)).

Cellular Location

Cytoplasm, cytoskeleton, cilium basal body. Cytoplasm, cytoskeleton, microtubule organizing center, centrosome, centriolar satellite. Cytoplasm, cytoskeleton, microtubule organizing center, centrosome, centriole Nucleus. Nucleus speckle {ECO:0000250|UniProtKB:Q8BMD2}. Cytoplasm. Note=Localizes to the centriole in cells lacking cilia and to the cilium basal body in ciliated cells (PubMed:19852954). At the exit of mitosis, when the primary cilium is reassembled in daughter cells, localizes at the mother centriole that acts as the basal body of the assembling primary cilium and also accumulates at the ciliary base that constitutes a diffusion barrier for ciliary proteins (By similarity). {ECO:0000250|UniProtKB:Q8BMD2, ECO:0000269|PubMed:19852954}

Tissue Location

Predominantly expressed in testis (at protein level) (PubMed:15081113, PubMed:32051257). Also expressed in fetal brain, adult oocytes and ovary (PubMed:15081113). Expressed in undifferentiated ES cells (PubMed:15081113). In testis, it is specifically expressed in germ cells (at protein level) (PubMed:15081113, PubMed:32051257). Expressed in mature germ cells and secondary spermatocytes, while it is weakly or not expressed in primary spermatocytes (PubMed:15081113).

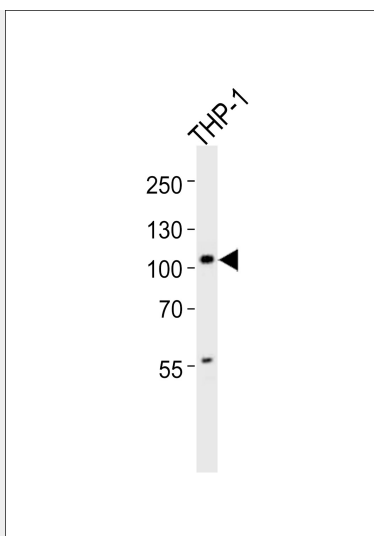
DZIP1 Antibody (C-term) - Protocols

Provided below are standard protocols that you may find useful for product applications.

- [Western Blot](#)
- [Blocking Peptides](#)
- [Dot Blot](#)
- [Immunohistochemistry](#)
- [Immunofluorescence](#)
- [Immunoprecipitation](#)
- [Flow Cytometry](#)
- [Cell Culture](#)

DZIP1 Antibody (C-term) - Images





Western blot analysis of lysate from THP-1 cell line, using DZIP1 Antibody (C-term)(Cat. #AP21074a). AP21074a was diluted at 1:1000. A goat anti-rabbit IgG H&L(HRP) at 1:10000 dilution was used as the secondary antibody. Lysate at 20ug.

DZIP1 Antibody (C-term) - Background

May participate in spermatogenesis via its interaction with DAZ.

DZIP1 Antibody (C-term) - References

Moore F.L.,et al.Proc. Natl. Acad. Sci. U.S.A. 100:538-543(2003).
Nagase T.,et al.DNA Res. 6:63-70(1999).
Dunham A.,et al.Nature 428:522-528(2004).
Bechtel S.,et al.BMC Genomics 8:399-399(2007).
Moore F.L.,et al.Genomics 83:834-843(2004).